

RangeMaxx[®]

Users manual

V-collector



1. Contents

1. Contents	1
2. Foreword	2
3. Warranty and liability	3
4. Safety	4
4.1 Safety warnings	4
4.2 Explanation of pictograms.....	4
4.3 Intended use and operation	5
5. Survey	6
6. Installation instructions	6
7. How to use the v-collector?	9
8. Maintenance	9
8.1 Cleaning in general	10
8.2 Replacement of the discs.....	10
9. Technical information	12

2. Foreword

You have received a Range Maxx® v-collector. We thank you for the faith that you have shown in our product. With the design and fabrication of our product we have given our best effort to the quality and durability in combination with an immense user- and maintenance friendliness. If you follow the instructions in this manual, the Range Maxx® v-collector will serve you for many years without hesitations.

This manual has been written for the Range Maxx® v-collector 3-gang, 5-gang and 7-gang.

This machine is exclusively meant for collecting golf balls. By change of usage, the CE marking loses its validity.

3. Warranty and liability

Range King golf course equipment gives you a warranty on a new machine for a period of 12 months on the mechanical and eventual electric parts.

Excluded from this warranty are failures, which are partially or fully caused by:

- a. non-observance of the operation- and warranty instructions or other than normal usage;
- b. normal wastage;
- c. alteration or repair by or on behalf of the buyer performed by third parties, without written approval of Range King;
- d. use of assemblies, which have not been supplied or mounted by Range King;
- e. damage to the machine caused during transportation, in case this damage is not reported instantly after receipt of the machine. Therefore, always immediately examine the machine completely and report transport damage.

Always mention in all correspondence the details mentioned on the identification tag. This tag is fixed to the A-frame.

If anything is not clear to you with reference to this product, please contact:

Range King golf course equipment
Dirk Storklaan 23-24
NL-2132 PX HOOFDORP
The Netherlands

www.rangeking.nl

T +31 23 562 3855
F +31 23 561 0262
info@rangeking.nl

4. Safety

4.1 Safety warnings

Read this manual thoroughly.



In case of material or personal accidents, caused by injudicious use or not following the safety instructions as described in the manual, we accept no liability.

The machine left the production factory in a perfectly safe state. In order to keep this state and to guarantee usage without danger, you must carefully follow the safety instructions and safety warnings mentioned in this user's manual.

Because of safety measures and admission demands (CE) it is not permitted to make alterations to the machine or its components.

Please refer to your supplier or a skilled craftsman if you have questions regarding the working method, safety or connections of the machine.

Do not leave the packing material unguarded. These materials can be hazardous for young children.

If it can be assumed that safe usage is not possible anymore, you must put the machine out of order and prevent intended usage. One can assume that safe usage is not possible anymore in case:

- the machine shows obvious damage;
- the machine does not function anymore;
- after a long period of storage under bad conditions
- after heavy transport circumstances

4.2 Explanation of pictograms

In this manual we regularly use warnings and tips. These have been with pictograms. Their meaning is as follows:



Danger! Warning!



Tip or relevant additional information.

4.3 Intended use and operation

The Range Maxx® “v-collector is exclusively intended for picking golf balls from a driving range. The collector must be pushed by a buggy or an equivalent vehicle.

When the collector is pushed forward, golf balls will stick in the gap between the plastic disks. The fingers will force the balls out of the gap, and in to the baskets. When the baskets are as good as full, they can be emptied.

The baskets of the Range Maxx® v-collector ought to be emptied manually. There are two types available; the bigger single basket and the smaller twin basket. See images below. Since 2005, due to regulations, the single baskets are not available anymore for new collectors.

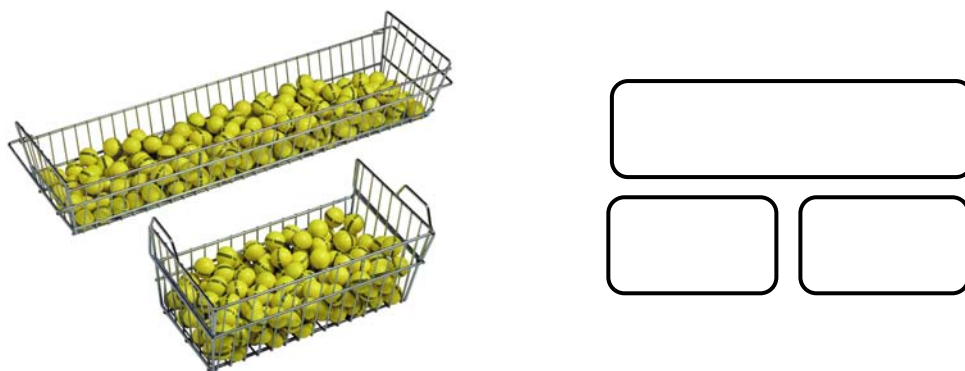
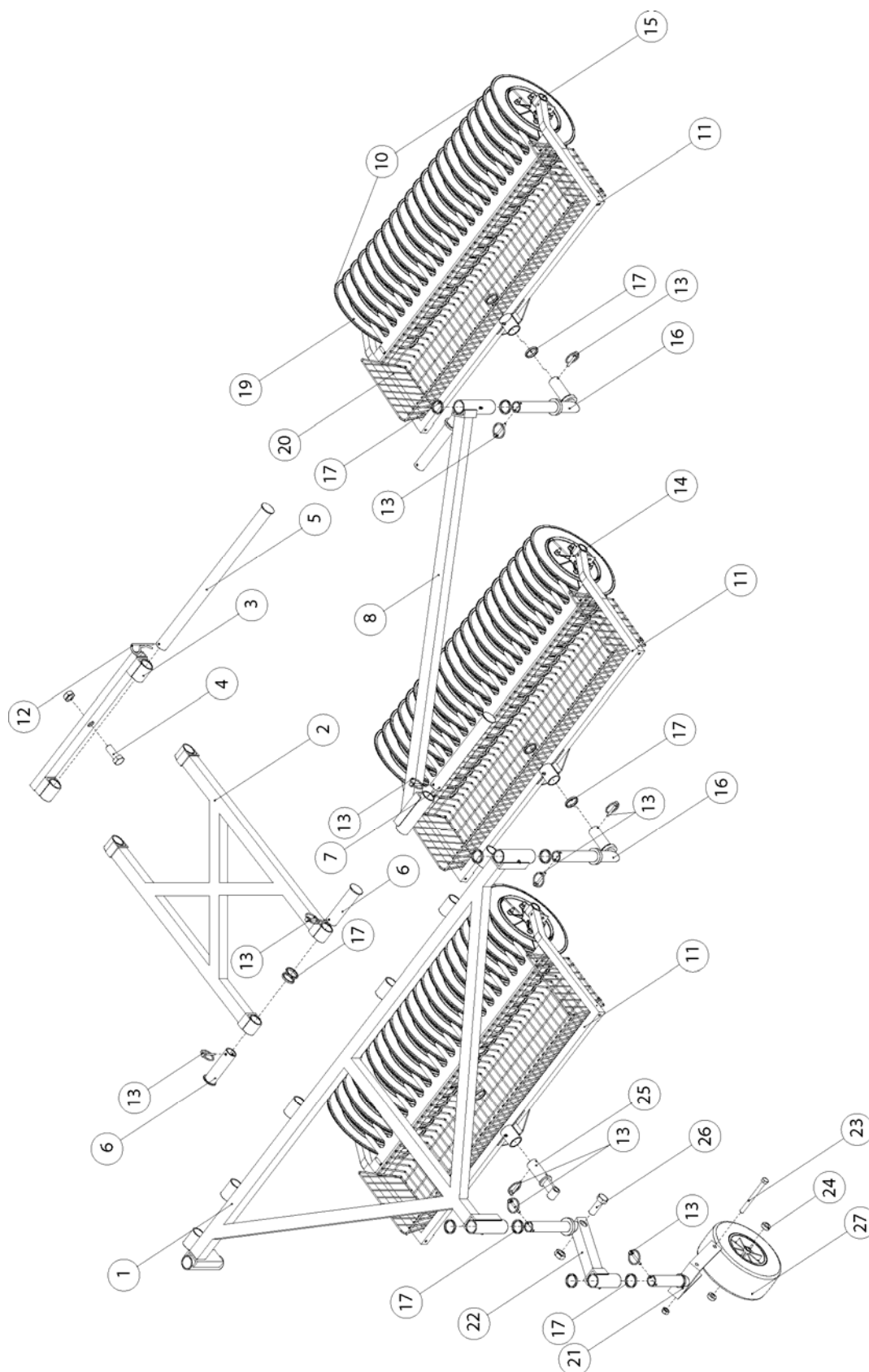


image 4.1, single basket and twin basket

5. Overview



Item nummer:	Discription:
01	A-frame
02	X-frame
03	Adapter bar
04	Adapter bold and nut
05	60 cm hitch pin
06	14 cm hitch pin
07	31 cm hitch pin
08	Extension bar (5-gang collector) left or right
09	Extension bar (7-gang collector) left or right (not illustrated)
10	Disc set complete
11	Finger frame
12	Hairpin
13	Clamp
14	Disc axle ring
15	Disc axle
16	Elbow
17	Elbow ring
19	Disc
20s	Ball basket (Single) 20t Ball Basket (Twin)
21	Wheel fork
22	Z-frame
23	Wheel axle
24	Wheel bearings
25	Tongue
26	Tongue bold and nut
27	Wheel + bearings
29	Grease nipple

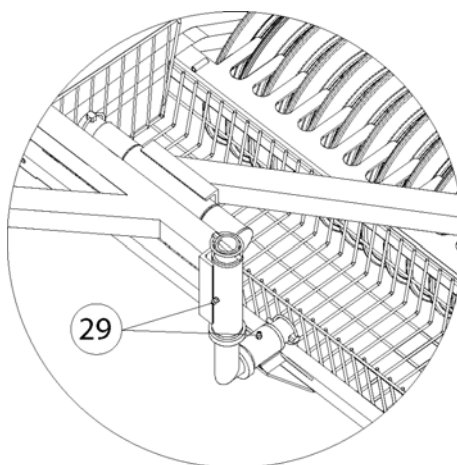


Image 5.1, grease nipple at elbow

6. Installation instructions

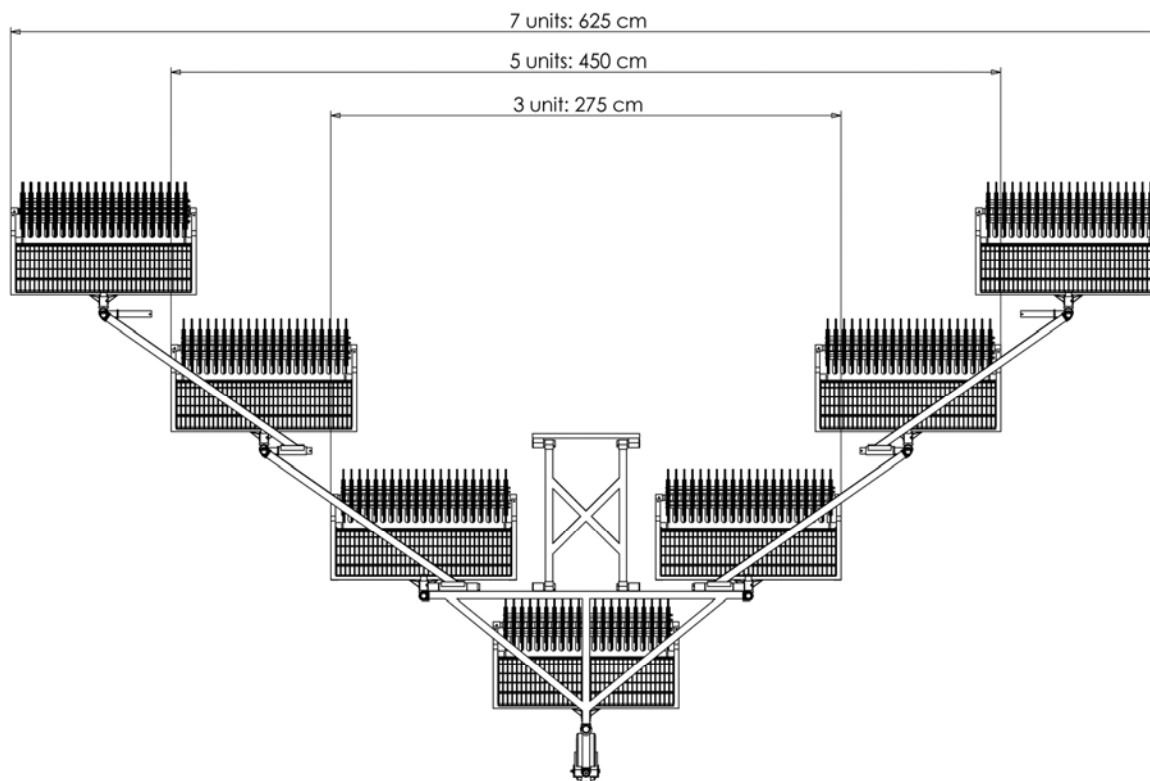


figure 6.1, width with number of units (gang)

Install the collector following these instructions:

- Connect the adapter bar to the thrusting vehicle with the 1 bolt included
- Attach the Z-frame (9) with wheel and rejecter to the A-frame (8) using the rings and clip
- Attach the Elbows (7) to the frame using the rings and clips, and connect the special tongue to the Z-frame for front finger frame.
- Connect the Finger frames (complete with disk-sets) to the elbows using the rings and clips.
- For 5 or 7 gang collector: Connect the extension bars then attach the elbows and finger frames.
- Connect the X-frame (3) to the A-frame (8)
- Attach the X-frame to the adapter bar on the vehicle with the hitch pin and hairpin
- Grease all rotating elements using the grease nipples.
- The collector is now ready to use.

7. How to use the collector?

- The recommended maximum speed to drive with the collector is 10 kilometers per hour.
- It is advisable to drive in a straight line and making an overlapping pattern, just like mowing grass.
- Never drive backwards with an attached collector.
- Never carry any persons on the ball collector when driving. As the collector is not built for this purpose, it will be seriously damaged if someone is carried on it.
- All rotating elements of the collector (except disc sets) should regularly be greased.

8. Maintenance

Period inspection and maintenance are necessary to keep the collector in perfect condition, and prevent defects.

- Daily

Check the collector for damages. Make sure every element is firmly connected.

- Weekly

Check the lubrication of the elbows and the Z-frame. Apply all grease nipples with grease at least 3 times a year.

- Monthly

After using the collector for some time it might be necessary to fasten the nuts of the disc sets a little. When one or more discs are damaged, replace them. For instructions see 'Replacing discs'.

8.1 Cleaning in general

The collector can be cleaned with a water jet.

Remove objects like rocks and branches immediately from disc sets.

8.2 Replacing discs

When the collector does not function as desired anymore, one or more discs might be damaged or worn out. These can be ordered individually or in a set at Rangeking or your supplier.

Discs can be easily replaced by following these instructions:

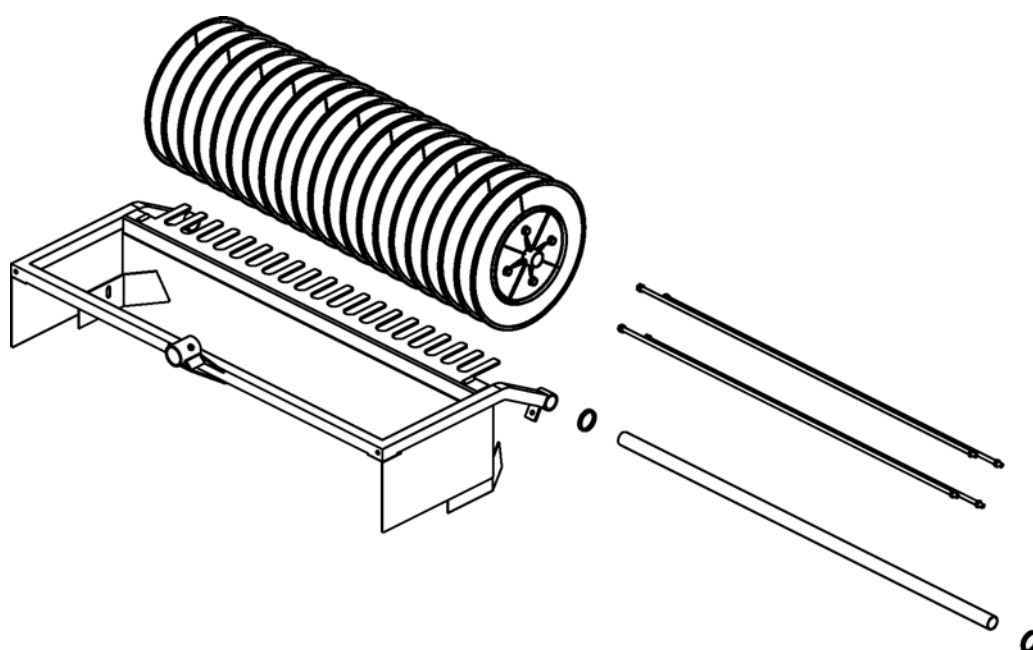


figure 8.2, assembly of the disc set + finger frame

- Unscrew the axle and pull it out the finger frame and disc set
- Take out the freed disc set and unscrew the four threaded ends
- Replace the faulty discs by new discs. Make sure the ribs on the discs are opposite (See figure 8.2); these ribs secure the balls when opposite (When they are installed not opposite, the collector won't operate properly).

Use the axle as centre guide to help position all discs.



- One complete disc set contains 20 normal discs, 1 end-disc, 4 threaded ends en 8 bolts with securing nuts. The spacers of the end-disc are removed.

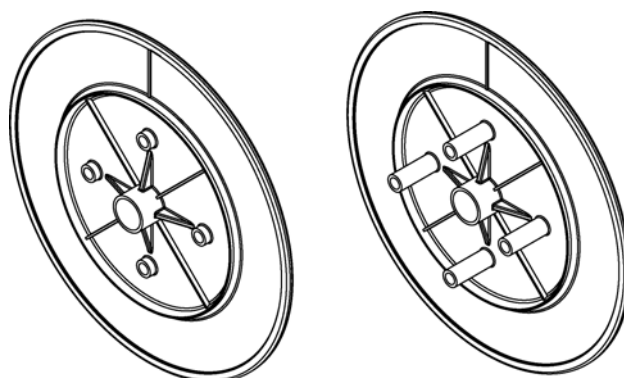


figure 8.3, end-disc and normal discs

- Position the disc set in the finger frame so that every finger of the frame is exactly in the middle of the gap between the discs. This can be done by placing or removing rings on the axle between the disc set and finger frame.

To help slide the axle in the disc set, dry graphite powder can be used.



- At last fasten the axle-bolts.

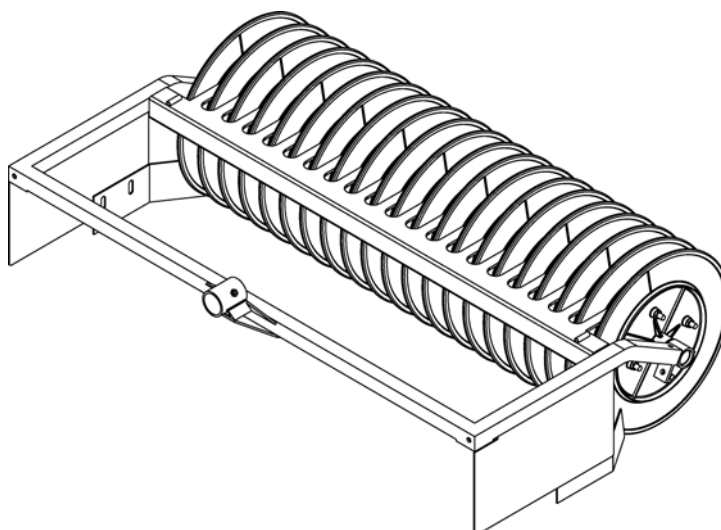


image 8.4, complete disc set + finger frame

9. Technical data

Range Maxx® V-collector			
	V-collector 3 units	V-collector 5 units	V-collector 7 units
Weight	130 kg	185 kg	240 kg
Width	260 cm	440 cm	620 cm
Capacity	1950 balls	3250 balls	4550 balls